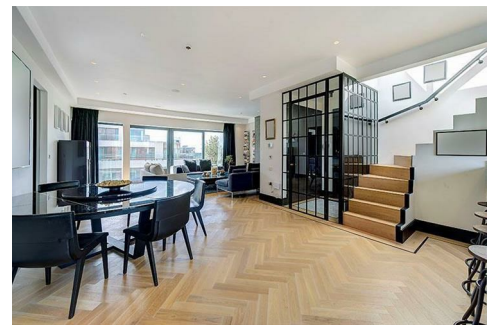
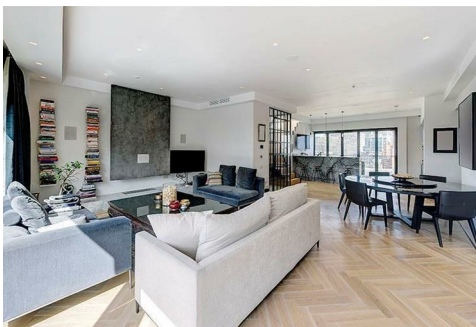




CHATTERTON | REES



396 Central Tower, London, SW1V 1AA

Guide price £3,100,000

A Stunning Two bedroom penthouse with beautiful views and an almost 900sqft roof terrace. This property is on the top floor of a purpose-built block in the heart of Victoria only moments away from Belgravia and Westminster as well as easy access in to central.

The building benefits from two passenger lifts and only two apartments on the penthouse floor, This particular penthouse has a front to back reception room open to a beautiful kitchen and dining area. There are two bedroom suites with their own bathrooms and plenty of wardrobe space along with air conditioning and modern fixtures throughout.

Finally, there is a staircase from the kitchen area taking you up to an 880sqft roof terrace with beautiful views over central London. A real rarity in such a location.

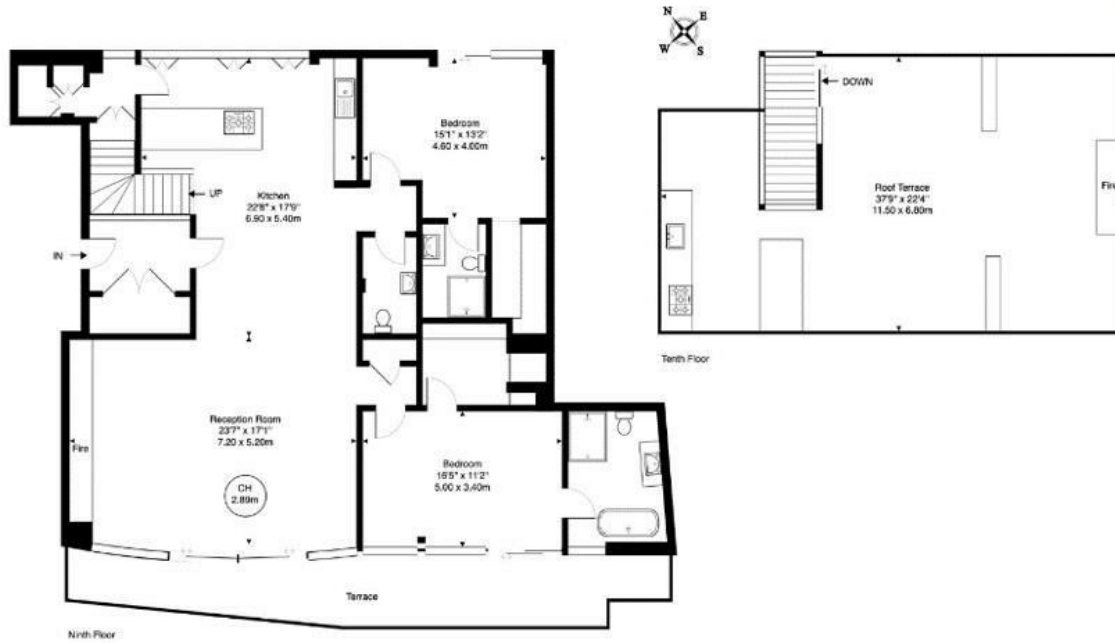
Floor Plan

Gross internal Area

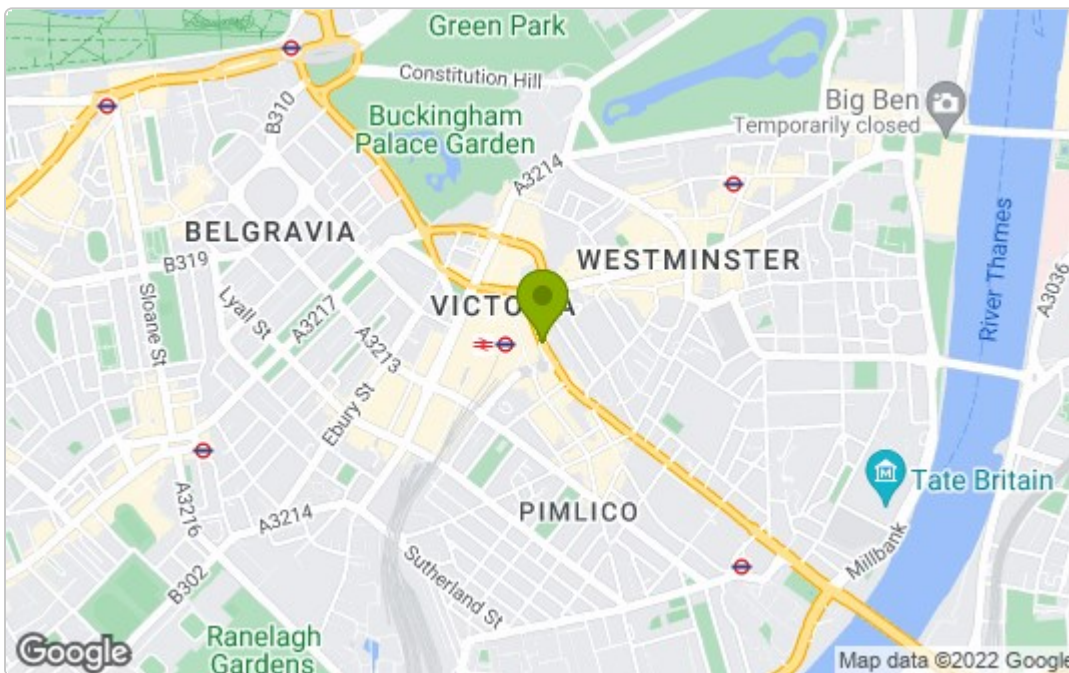
1630sqft / 151 sqm

Outside Terrace

880sqft / 82 sqm



Area Map



Energy Efficiency Graph

Energy Efficiency Rating		
	Current	Potential
Very energy efficient - lower running costs		
(92 plus) A		
(81-91) B		
(69-80) C		
(55-68) D		
(39-54) E		
(21-38) F		
(1-20) G		
Not energy efficient - higher running costs		
England & Wales EU Directive 2002/91/EC		
Environmental Impact (CO ₂) Rating		
	Current	Potential
Very environmentally friendly - lower CO ₂ emissions		
(92 plus) A		
(81-91) B		
(69-80) C		
(55-68) D		
(39-54) E		
(21-38) F		
(1-20) G		
Not environmentally friendly - higher CO ₂ emissions		
England & Wales EU Directive 2002/91/EC		

These particulars, whilst believed to be accurate are set out as a general outline only for guidance and do not constitute any part of an offer or contract. Intending purchasers should not rely on them as statements of representation of fact, but must satisfy themselves by inspection or otherwise as to their accuracy. No person in this firm's employment has the authority to make or give any representation or warranty in respect of the property.